



Parto Sahand Ara

DX DIAPHRAGM

DIAPHRAGM EXTENDED



www.arainstrument.com



Diaphragm Seal Type DX

Applications

- Aggressive, highly viscous, crystallising or hot media
- Process industry
- Thick-walled or insulated pipelines and vessels



Diaphragm seal with flange connection, model DX

Description

Diaphragm seals are used for the protection of pressure measuring instruments in applications with difficult media. In diaphragm seal systems, the diaphragm of the diaphragm seal effects the separation of the instrument and the medium. The pressure is transmitted to the measuring instrument via the system fill fluid which is inside the diaphragm seal system. For the implementation of demanding customer applications, there are a wide variety of designs, materials and system fill fluids available.

- The model DX diaphragm seal is available in a wide variety of dimensions following the usual standards for this market. Due to the extended diaphragm, the diaphragm seal can be used at thick-walled or insulated locations in pipeline and vessel construction
- Type of mounting :
Direct mounting
Capillary or Cooling element



Diaphragm Seal Type DX

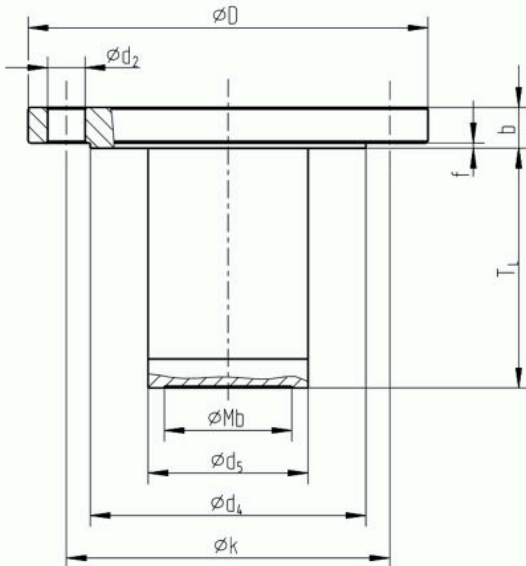
Material combinations

Upper body of diaphragm seal	Wetted parts	Maximum permissible process temperature in °C [°F]
Stainless steel 1.4404 (316L)	Stainless steel 1.4404 / 1.4435 (316L), standard version	400 [752]
	Stainless steel 1.4539 (904L)	
	Stainless steel 1.4541 (321)	
	Stainless steel 1.4571 (316Ti)	
	ECTFE coating	150 [302]
	PFA (perfluoroalkoxy) coating, FDA	260 [500]
	PFA (perfluoroalkoxy) coating, antistatic	
	Gold plating	400 [752]
	Wikaramic® coating	
	Hastelloy C22 (2.4602)	260 [500]
	Hastelloy C276 (2.4819)	400 [752]
	Inconel 600 (2.4816)	
	Inconel 625 (2.4856)	
	Incoloy 825 (2.4858)	
	Monel 400 (2.4360)	260 [500]
	Nickel 200 (2.4060, 2.4066)	
Titanium grade 2 (3.7035)		
Titanium grade 11 (3.7225)		
Tantalum	300 [572]	
Stainless steel 1.4435 (316L)	Stainless steel 1.4435 (316L)	400 [752]
Stainless steel 1.4539 (904L)	Stainless steel 1.4539 (904L)	
Stainless steel 1.4541 (321)	Stainless steel 1.4541 (321)	
Stainless steel 1.4571 (316Ti)	Stainless steel 1.4571 (316Ti)	
Duplex 2205 (1.4462)	Duplex 2205 (1.4462)	300 [572]
Superduplex 2507 (1.4410)	Superduplex 2507 (1.4410)	
Hastelloy C22 (2.4602)	Hastelloy C22 (2.4602)	400 [752]
Hastelloy C276 (2.4819)	Hastelloy C276 (2.4819)	
Inconel 600 (2.4816)	Inconel 600 (2.4816)	
Inconel 625 (2.4856)	Inconel 625 (2.4856)	
Incoloy 825 (2.4558)	Incoloy 825 (2.4858)	
Monel 400 (2.4360)	Monel 400 (2.4360)	
Nickel 200 (2.4060, 2.4066)	Nickel 200 (2.4060, 2.4066)	
Titanium grade 2 (3.7035)	Titanium grade 2 (3.7035)	
Titanium grade 7 (3.7235)	Titanium grade 11 (3.7225)	



Diaphragm Seal Type DX

Dimensions in mm [in]



Legend:

- Mb Effective diameter of diaphragm
- D Outer diameter of diaphragm seal
- TL Length of extension
- b Flange thickness
- d₂ Bore diameter
- f Height of raised face
- k Pitch circle diameter
- d₄ Sealing face diameter
- d₅ Diameter of extension
- x Number of screws

DN	Class	Dimensions in mm [in]								x
		Mb	D	b	d ₂	K	f	d ₄	d ₅ +1[0.039]-0.5 [0.020]	
1 ½"	150	35 [1.378]	125 [4.921]	17.9 [0.705]	16 [0.63]	98.4 [3.874]	2 [0.079]	73 [2.874]	38 [1.496]	4
	300	35 [1.378]	155 [6.102]	21.1 [0.831]	22 [0.866]	114.3 [4.5]	2 [0.079]	73 [2.874]	38 [1.496]	4
2"	150	45 [1.772]	150 [5.906]	19.5 [0.768]	19 [0.748]	120.7 [4.752]	2 [0.079]	92 [3.622]	48.3 [1.902]	4
	300	45 [1.772]	165 [6.496]	22.7 [0.894]	19 [0.748]	127 [5]	2 [0.079]	92 [3.622]	48.3 [1.902]	8
3"	150	72 [2.835]	190 [7.48]	24.3 [0.957]	19 [0.748]	152.4 [6]	2 [0.079]	127 [5]	76 [2.992]	4
	300	72 [2.835]	210 [8.268]	29 [1.142]	22 [0.866]	168.3 [6.626]	2 [0.079]	127 [5]	76 [2.992]	8
4"	150	89 [3.504]	230 [9.055]	24.3 [0.957]	19 [0.748]	190.5 [7.5]	2 [0.079]	158 [6.22]	94 [3.701]	8
	300	89 [3.504]	255 [10.039]	32.2 [1.268]	22 [0.866]	200 [7.874]	2 [0.079]	158 [6.22]	94 [3.701]	8

DN	Class	Dimensions in mm [in]								x
		Mb	D	b	d ₂	K	f	d ₄	d ₅ +1[0.039]-0.5 [0.020]	
50	10/40	45 [1.772]	165 [6.496]	20 [0.787]	18 [0.709]	125 [4.921]	2 [0.079]	102 [4.016]	48.3 [1.902]	4
80	10/16	72 [2.835]	200 [7.874]	20 [0.787]	18 [0.709]	160 [6.299]	2 [0.079]	138 [5.433]	76 [2.92]	8
	25/40	72 [2.835]	200 [7.874]	24 [0.945]	18 [0.709]	160 [6.299]	2 [0.079]	138 [5.433]	76 [2.92]	8
100	10/16	89 [3.504]	220 [8.661]	20 [0.787]	18 [0.709]	180 [7.087]	2 [0.079]	158 [6.22]	94 [3.701]	8
	25/40	89 [3.504]	235 [9.252]	24 [0.945]	22 [0.866]	190 [7.48]	2 [0.079]	162 [6.378]	94 [3.701]	8
125	10/16	124 [4.882]	250 [9.842]	22 [0.866]	18 [0.709]	210 [8.268]	2 [0.079]	188 [7.402]	125 [4.921]	8
	25/40	124 [4.882]	270 [10.63]	26 [1.024]	26 [1.024]	220 [8.661]	2 [0.079]	188 [7.402]	125 [4.921]	8



Diaphragm Seal Type DX

Order Code

DX Configuration		
1	Process Connection	
	25	1" DN25
	40	1½" DN40
	50	2" DN50
	80	3" DN80
	100	4" DN100
	125	5" DN120
	*	Other - please specify
2	Nominal Pressure Rating DIN	
	C1	Class 150
	C2	Class 300
	P1	PN 10
	P2	PN 16
	P3	PN 25
	P4	PN 40
	*	Other - please specify
3	Sealing Face	
	RF	RF
	*	Other - please specify
4	Length of extension (TL)	
	05	5 cm
	10	10 cm
	x	xxxx
5	Flanged Material	
	S	316L SS (1.4435)
	H	Hastelloy C276 (2.4819)
	I	Inconel 600 (2.4816)
	T	Tantalum
	M	Monel 400 (2.4360)
*	Other - please specify	

6	Diaphragm Material	
	S	316L SS (1.4435)
	H	Hastelloy C276 (2.4819)
	I	Inconel 600 (2.4816)
	T	Tantalum
	G	Gold
	M	Monel 400 (2.4360)
*	Other - please specify	
7	Instrument connection	
	1	1/4" NPT-female
	2	1/2" NPT-female
	3	Radial weld-in connection
	4	Axial weld-in connection
*	Other - please specify	
8	Accessory	
	1	Capillary
	2	PTFE coated
	3	N/A
	*	Other - please specify

Additional order details _____

DX - -

1 2 3 4 5 6 7 8



Parto Sahand Ara

Unit 68, First floor, No.22
Somayeh St., Mousavi St.
Tehran-IRAN

www.arainstrument.com
info@arainstrument.com
+98-21-88810155-9
+98-991-2503500