



Parto Sahand Ara

# AFR DIAPHRAGM

ACCESSORY FLUSHING RING





## Diaphragm Seal Type AFR

### Applications

- For flange-connection diaphragm seals with flush diaphragm or cell-type design
- Flushing of process lines to avoid deposits or clogging
- Cleaning deposits off diaphragms
- Measuring location calibration after separation from the process



### Description

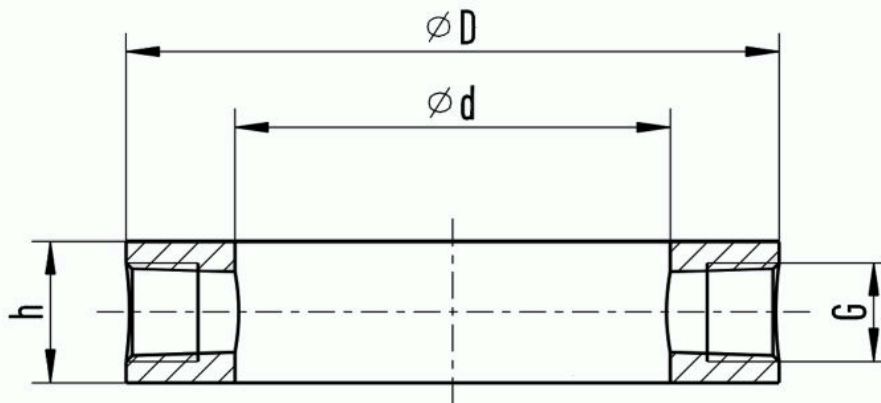
The model AFR flushing ring is mounted between the diaphragm seal (either flange-type or cell-type design) and the process flange using standardised sealings. The flushing ring is available with one or two flushing bores located at the side. Deposits, especially those on the diaphragm, can be removed by flushing and cleaning in order to avoid any impairment of the measurement. Flushing rings with mounted valves extend diaphragm seal systems so that maintenance can be carried out with them still fitted.

- Wide choice of special materials
- Common standards, nominal widths and flushing connections available
- Flushing bores with plug screws
- Flushing ring with mounted valves



## Diaphragm Seal Type AFR

### Dimensions in mm [in]



DN	Class	Dimensions in mm [in]			Weight in kg [lbs]
		D	d	h	
2"	150 ... 600	92 [3.622]	62 [2.441]	30 [1.181]	0.60 [1.323]
3"	150 ... 600	127 [5.000]	92 [3.622]	30 [1.181]	1.05 [2.315]
4"	150 ... 600	157 [6.181]	92 [3.622]	30 [1.181]	2.85 [6.283]
5"	150 ... 600	185.5 [7.303]	126 [4.961]	30 [1.181]	3.30 [7.275]



## Diaphragm Seal Type AFR

### Order Code

AFR Configuration	
1	<b>Process Connection</b>
	40 1½" DN40
	50 2" DN50
	80 3" DN80
	100 4" DN100
* Other - please specify	
2	<b>Nominal Pressure Rating</b>
	C1 Class 150
	C2 Class 300
	C3 Class 600
	C4 Class 1500
* Other - please specify	
3	<b>Sealing Face</b>
	RF RF
	RTJ RTJ
* Other - please specify	
4	<b>Material Wetted Parts</b>
	S 316L SS (1.4435)
	H Hastelloy C276 (2.4819)
	I Inconel 600 (2.4816)
	M Monel 400 (2.4360)
* Other - please specify	
5	<b>Flushing Connection 1</b>
	1 2 x 1/4" NPT
	2 2 x 1/2" NPT
* Other - please specify	

Additional order details \_\_\_\_\_

AFR - 

--	--	--	--	--

  
1                  2                  3                  4                  5





Parto Sahand Ara

Unit 68, First floor, No.22  
Somayeh St., Mousavi St.  
Tehran-IRAN

[www.arainstrument.com](http://www.arainstrument.com)  
[info@arainstrument.com](mailto:info@arainstrument.com)  
+98-21-88810155-9  
+98-991-2503500