



Parto Sahand Ara

# DFR DIAPHRAGM

DIAPHRAGM FLANGE ROTATION



[www.arainstrument.com](http://www.arainstrument.com)



## Diaphragm Seal Type DFR

### Applications

- Process industry
- High-pressure applications
- Aggressive, highly viscous, crystallising or hot media



### Description

Diaphragm seals are used for the protection of pressure measuring instruments in applications with difficult media. In diaphragm seal systems, the diaphragm of the diaphragm seal effects the separation of the instrument and the medium.

- Connection to the measuring instrument : Axial gauge adapter
- Type of mounting : Capillary with handling tube



## Diaphragm Seal Type DFR

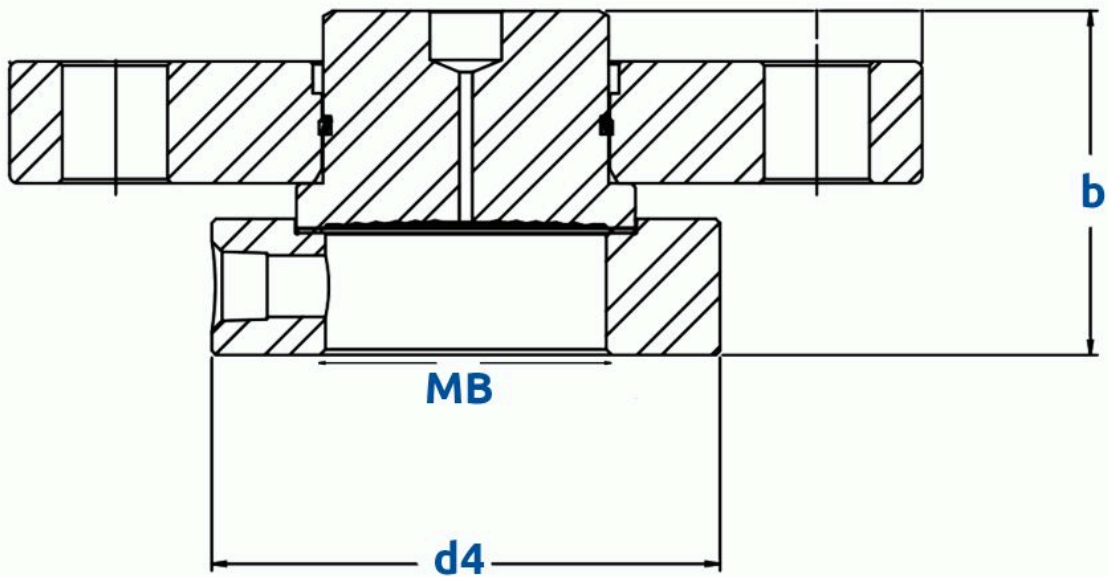
### Material combinations

Upper body of diaphragm seal	Wetted parts	Maximum permissible process temperature in °C [°F]
Stainless steel 1.4404 (316L)	Stainless steel 1.4404 / 1.4435 (316L), standard version	400 [752]
	Stainless steel 1.4539 (904L)	
	Stainless steel 1.4541 (321)	
	Stainless steel 1.4571 (316Ti)	
	ECTFE coating	150 [302]
	PFA (perfluoroalkoxy) coating, FDA	260 [500]
	PFA (perfluoroalkoxy) coating, antistatic	
	Gold plating	400 [752]
	Wikaramic® coating	400 [752]
	Hastelloy C22 (2.4602)	
	Hastelloy C276 (2.4819)	
	Inconel 600 (2.4816)	
	Inconel 625 (2.4856)	
	Incoloy 825 (2.4858)	
	Monel 400 (2.4360)	
	Nickel 200 (2.4060, 2.4066)	260 [500]
	Titanium grade 2 (3.7035)	150 [302]
Titanium grade 11 (3.7225)	300 [572]	
Tantalum		
Stainless steel 1.4435 (316L)	Stainless steel 1.4435 (316L)	400 [752]
Stainless steel 1.4539 (904L)	Stainless steel 1.4539 (904L)	
Stainless steel 1.4541 (321)	Stainless steel 1.4541 (321)	
Stainless steel 1.4571 (316Ti)	Stainless steel 1.4571 (316Ti)	
Duplex 2205 (1.4462)	Duplex 2205 (1.4462)	300 [572]
Superduplex 2507 (1.4410)	Superduplex 2507 (1.4410)	
Hastelloy C22 (2.4602)	Hastelloy C22 (2.4602)	400 [752]
Hastelloy C276 (2.4819)	Hastelloy C276 (2.4819)	
Inconel 600 (2.4816)	Inconel 600 (2.4816)	
Inconel 625 (2.4856)	Inconel 625 (2.4856)	
Incoloy 825 (2.4558)	Incoloy 825 (2.4858)	
Monel 400 (2.4360)	Monel 400 (2.4360)	
Nickel 200 (2.4060, 2.4066)	Nickel 200 (2.4060, 2.4066)	
Titanium grade 2 (3.7035)	Titanium grade 2 (3.7035)	
Titanium grade 7 (3.7235)	Titanium grade 11 (3.7225)	



## Diaphragm Seal Type DFR

### Dimensions in mm [in]



DN	Dimensions in mm [in]		
	Mb	$d_4$	b
1 ½"	45 [1.772]	73 [2.874]	20 [0.787]
2"	60 [2.362]	92.1 [3.626]	20 [0.787]
3"	90 [3.543]	127 [5.0]	20 [0.787]
4"	90 [3.543]	157.2 [6.189]	20 [0.787]



## Diaphragm Seal Type DFR

### Order Code

DFR Configuration		
1	<b>Process Connection</b>	
	40	1½" DN40
	50	2" DN50
	80	3" DN80
	100	4" DN100
*	Other - please specify	
2	<b>Nominal Pressure Rating DIN</b>	
	C1	Class
	P1	PN
	*	Other - please specify
3	<b>Sealing Face</b>	
	RF	RF
	*	Other - please specify
4	<b>Material of Wetted Parts</b>	
	S	316L SS (1.4435)
	H	Hastelloy C276 (2.4819)
	I	Inconel 600 (2.4816)
	T	Tantalum
	M	Monel 400 (2.4360)
*	Other - please specify	

5	<b>Diaphragm Material</b>	
	S	316L SS (1.4435)
	H	Hastelloy C276 (2.4819)
	I	Inconel 600 (2.4816)
	T	Tantalum
	G	Gold
	M	Monel 400 (2.4360)
*	Other - please specify	
6	<b>Instrument connection</b>	
	1	Axial weld-in connection
	3	Radial weld-in connection
	*	Other - please specify
7	<b>Accessory</b>	
	1	Capillary
	2	Flush Ring
	3	Flange
	4	PTFE coated
	5	N/A
*	Other - please specify	

Additional order details \_\_\_\_\_

DFR - 

--	--	--	--	--	--	--

 - 

--

1      2      3      4      5      6      7



Parto Sahand Ara

Unit 68, First floor, No.22  
Somayeh St., Mousavi St.  
Tehran-IRAN

[www.arainstrument.com](http://www.arainstrument.com)  
[info@arainstrument.com](mailto:info@arainstrument.com)  
+98-21-88810155-9  
+98-991-2503500